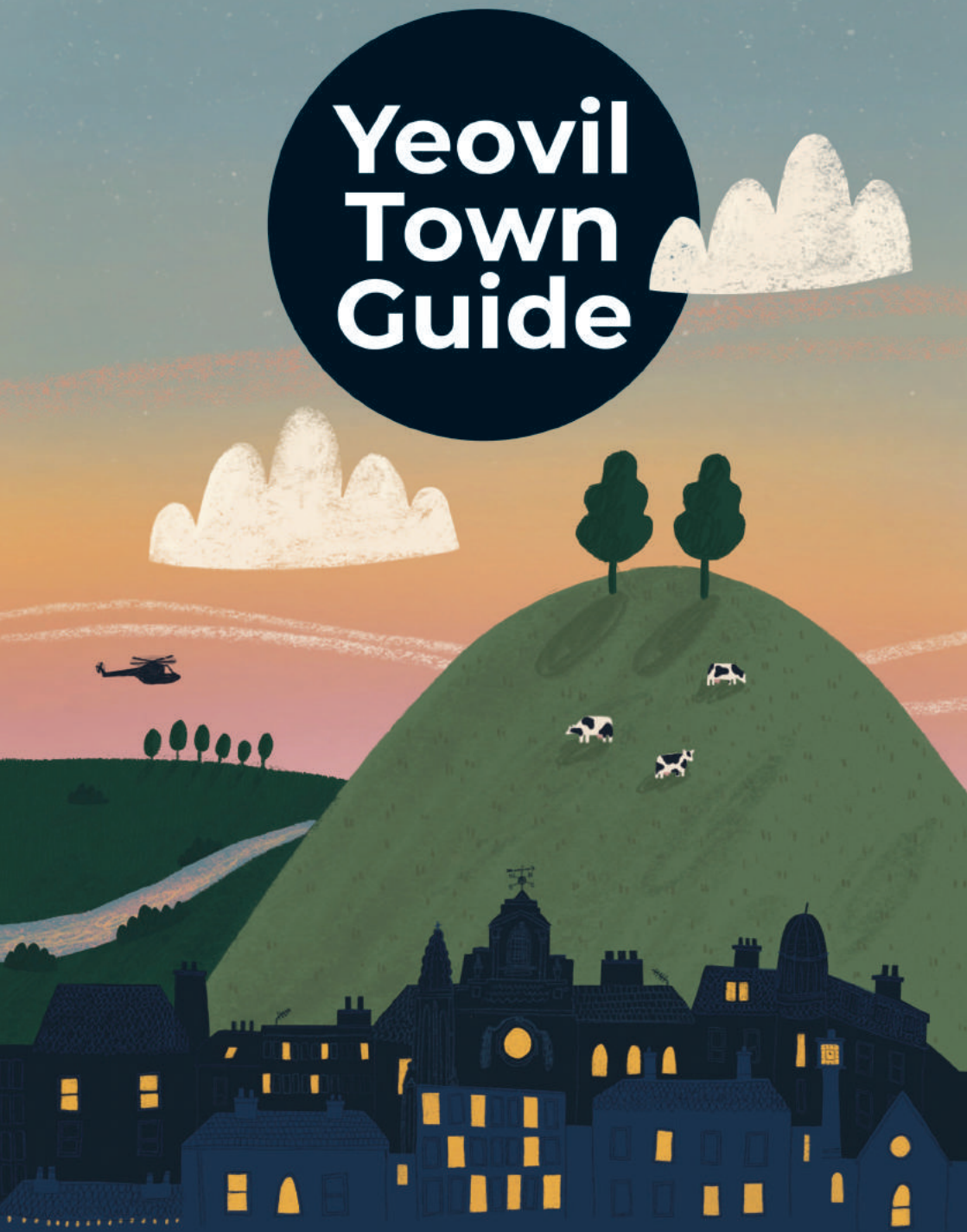


Yeovil Town Guide



YEOVIL TOWN COUNCIL

QUEDAM
DISCOVER STYLE

YOUR QUEDAM

HOME TO OVER 45 BRANDS
AND INDEPENDENTS



NEW LOOK



QUEDAM SHOPPING CENTRE, 10 IVEL SQUARE, YEOVIL BA20 1EY

A big hello from Evie and welcome to Yeovil!

I am determined that my reign as Mayor of Yeovil will be significant in beginning new relationships between the Town and visitors by embracing opportunities and building connections to help shape a healthy future for Yeovil. I look forward to engaging with the wider community and would like to welcome you all to Our Town Guide.

I was born in Yeovil 43 years ago and I have found that as the Town has grown over the years so has my passion for it. My favourite thing about Yeovil is the resourcefulness of thy neighbour. Yeovil has a strengthened community built on the backbone of dedicated volunteers and community cohesion. The volunteering network has helped to create friendships, to maintain high standard open areas, and has helped people to gain many skills. This is a town that prides itself on people, business links and opportunities for all.



Yeovil's steep and fascinating history in gloving and helicopter engineering is still present today. This guide has been designed and inspired by locals to give you flavours of what we have on offer and to give you the foundations to start your own explorations and journeys.

Evie Potts-Jones, Mayor of Yeovil



Yeovil Town Guide

YEOVIL OFFICIAL TOWN GUIDE 2022 - 2023

Produced and designed by Simon Barber

Illustrations by Rachel Akerman (front cover and page 21)

The Town Council would like to thank all those who contributed to this Guide
Photographs: Len Copland (pages 3, 4, 5, 6, 7, runner page 9, pages 18, 32, 37, 42), BW Mounsher (pond, page 9), Terry Gillard (swans, page 9), Jamie Pippard (waterfall, page 9), Hollie Barber (pages 10, 30), Pauline Burr (Barwick Park Follies, page 11), South Somerset Heritage Collection (pages 24, 26, 29), Ramona Morton (page 33)



Events in and around Yeovil

Every Week

Tuesday and Friday: Yeovil Market, Middle Street

August 2022

20: Yeovil Independent Market, town centre
Dog Show, Ham Hill Country Park

September 2022

3: Yeovil Pride
17: Super Saturday (including Eat Festival), town centre

October 2022

20 - 25: Yeovil Literary Festival

November 2022

11: Remembrance Ceremony
12: Sherborne Castle Fireworks, Sherborne
13: Remembrance Parade
18: Yeovil Independent Market, town centre
18: Christmas Lights Switch On and Lantern Parade, town centre
26: Mayor's Ball

December 2022

10: Eat Festival, town centre

March 2023

26: Yeovil Half Marathon, town centre (above)

April 2023

Town Criers Competition, King George Street, Yeovil
Abbey Hill Steam Rally, Yeovil Showground
Eat Festival, Yeovil

May 2023

29: Sherborne Castle Country Fair, Sherborne Castle

June 2023

Royal Bath & West Show, Showground, Shepton Mallet
Home Farm Music Festival, Chilthorne Domer

July 2023

Yeovil Independent Market, town centre
Somerset Steam & Country Show, Low Ham, Langport

This is only a small sample of local periodic events. Full details of these may be obtained from the Tourist Information Centre, Petters Way, Yeovil. Telephone 01935 462781

Details of local events are available at yeoviltown.com



Super Saturday

On a Saturday in September, Yeovil town centre comes alive with music, storytelling, crafts, children’s entertainment, community stalls and much more.

Every year we look forward to welcoming talented musicians from near and far to perform throughout the town as part of Buskfest, providing an audio backdrop to the array of fantastic activities and fabulous entertainment.

Bugfest regularly joins in the fun as Nick and his team educate and awe, providing fascinating insights into the world of mini beasts and creepy crawlies. Come along and learn about the antics of a tarantula and the traits of invertebrates.

A stilt walker helps you find your way around - from the delicious food stalls to hands on arts activities, or maybe even learning to juggle!



01935 382424 / 07487 745817 / ytic@yeovil.gov.uk / facebook.com/yeovilsupersaturday/



Sutton Bingham Reservoir

Attractions in South Somerset

In and around the town

You will find plenty to see and explore in Yeovil, whether you are visiting for a few hours of shopping and relaxation, or if you are coming as a business or leisure visitor for several days.

In the heart of the town there are large chain stores along with small independent shops, twice-weekly markets, a multi-screen cinema, indoor bowling, swimming pools, gym facilities and a large library.

Yeovil is proud of the Green Flag award winning Country Park adjoining the town centre, with woodlands and grasslands, river and lakes to enjoy - all teeming with wildlife - and a children's play area.

You will find plentiful parking in Yeovil and a good choice of places to eat and drink.

The town has an 18-hole golf course, and the Yeovil Recreation Centre boasts an athletics arena, football pitches and artificial grass

pitch, tennis courts, mini-golf and pitch-and-putt. The Flagship Play space is an exciting place for children, with tree-house walkways with rope bridges, net tunnels and climbing walls, a zip wire and a large sandpit.

On the fringes of the town there is seasonal fishing, sailing and canoeing at Sutton Bingham Reservoir. The South Somerset Heritage Collection with extensive local photo archive, archaeology and industrial heritage collections can be visited by appointment (further information on page 29).

Yeovil's Pen Mill railway station is on the Heart of Wessex line making it an easy trip to some of Somerset's loveliest towns - Bath, Bruton, Castle Cary and Frome - and the beautiful Dorset coast. There is a green by-pass so that you can walk or cycle off-road between Pen Mill and the town centre. Yeovil Junction Station is on the mainline between London Waterloo and Exeter.



Haynes International Motor Museum

Further afield

Travel a little further afield to see the Fleet Air Arm Museum at Royal Naval Air Station (RNAS) Yeovilton, with an annual international summer air-show and nearby the Fleet Air Arm Memorial Church and military cemetery.

Less than 15 miles from Yeovil, you can discover beautiful and historic villages. East Coker (2 miles) is connected with the poet TS Eliot. At Montacute (4 miles) there is an Elizabethan house, Montacute House (below), a National Trust property with long gallery displaying portraits from the National Portrait Gallery. Also owned by the National Trust is Tintinhull Garden (5 miles) with glittering pools, secluded lawns, colourful borders, providing a perfect place to relax and enjoy tranquillity.



The Haynes International Motor Museum at Sparkford boasts the UK's largest collection of the greatest cars from around the world with over 400 amazing cars and bikes from the dawn of motoring in the late 1800s through nostalgic classics of the 1950s and 1960s, glorious Bentleys and Rolls Royces to world renowned super cars like the Jaguar XJ220.

Beautiful Muchelney on the Somerset Levels has an ancient abbey (English Heritage), pottery and idyllic riverside walking. Come here to listen to birdsong or spot an otter. This is perfect country for leisure cycling.

The friendly staff at Yeovil's Visitor Information Centre will be happy to tell you about accommodation and eating-out in the town, getting around and places to see.

Visit the Centre daily, 9am to 1pm and 1.30 to 4pm at Cartgate Picnic Site, near Stoke-sub-Hamdon, TA14 6RA (A303 / A3088) or telephone 01935 829333.

You will find information 24 hours a day at visit@southsomerset.com.gov.uk / visitsouthsomerset.com

Yeovil Country Park

Each day many people make the five minute walk from Yeovil town centre, either past Penn House or the Octagon Theatre, through to the historic park of Penn Hill. A short stroll past Goldenstones takes you to the woodlands, waterfalls and wildlife of the lake and Valley Garden of Ninesprings.

From here a walk along the Yeovil - Taunton old railway line takes you to Summerhouse and Wyndham Hills. These hills offer peaceful locations to admire the view. To the north, landmarks of Yeovil Town, to the east, Cadbury Castle and to the south the Dorset hills. Lastly, crossing Sherborne Road, there is a tranquil stretch called Riverside Walk, which has now been extended to an area of floodplain meadow beneath Wyndham Park.

These five sites, whilst retaining their individual names, are collectively known as the Green Flag Award winning Yeovil Country Park.

Exploring Yeovil Country Park

You can explore Yeovil Country Park on a good network of paths. A great starting point is the Ninesprings Cafe, adjacent to Goldenstones car park. Here you can learn more about the history of the country park and its industrial heritage, as well as discovering the wildlife you can look out for on your walk. Details of forthcoming countryside events, trails and activities throughout the park can also be found here and of course a hot drink and a cake will tempt you to stay a little while longer.

There is a cycleway along the old railway line and in Ninesprings there is an easy access trail with gentler gradients, improved paths and wide kissing gates.



Whilst out and about in the Country Park look out for:

- ◆ Kingfishers and herons on the lake at Ninesprings
- ◆ Green and great spotted woodpeckers in the woodlands and meadow
- ◆ Badgers and roe deer in the quieter areas of Riverside Walk
- ◆ Otters and water voles in Dodham Brook and the River Yeo
- ◆ Woodland plants in the spring including bluebells, primroses, wood anemones and ramsons.

More details about the diverse range of public events and activities taking place can be found at visitsouthsomerset.com

The Ranger Team

The Country Park has a small but dedicated and professional ranger team. You will often see them out and about across the site. The rangers are incredibly knowledgeable and will happily answer any questions that you may have.

Get involved

Become a volunteer ranger and you can plant trees, survey wildlife, check nest boxes and get involved in any other activities. Volunteer rangers receive training and all the equipment they need and meet every Thursday throughout the year.

Alternatively join the Friends of Yeovil Country Park who help to fundraise, assist with events and develop projects for the Country Park.



Off Brunswick Street, Yeovil, BA20 1QZ
01935 462462

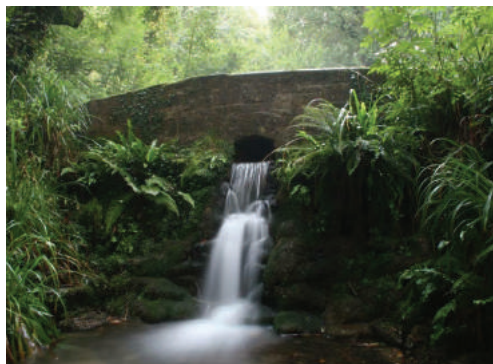
visitsouthsomerset.com

countryside@southsomerset.gov.uk

Facebook: Yeovil Country Park

Twitter: @SSDCCountryside

Instagram: @yeovilcountrypark





Ham Hill Country Park

Offering superb views of the South Somerset Levels, Exmoor and the Mendip Hills, Ham Hill Country Park has something for everyone.

The Green Flag Award winning Country Park has a wealth of wildlife to discover that are found in two distinct habitats; wildflower meadows and mature woodlands. Spot skylarks and orchids in the fields and find signs of badgers and spot roe deer in the woodlands.

This Iron Age hillfort also has many archaeological features to explore such as Iron Age ramparts, Medieval strip lynchets, and Victorian quarries.

To learn more about Ham Hill including events, historical and wildlife information and to download suggested walks or free activity packs see visitsouthsomerset.com or telephone **01935 462462**.

Octagon Theatre

The Octagon Theatre is South Somerset's premier arts and entertainment venue. Owned and managed by South Somerset District Council, the venue regularly welcomes over 125,000 visitors a year for a range of fantastic live performances from top quality production companies.

The theatre's programme offers something for everyone with performances for children, world-class comedy, stunning opera and dance, captivating drama and fantastic live music.

The venue's Johnson Studio is home to a busy community participatory programme: The Octagon Academy, where you'll find classes for all ages and abilities in music, drama and dance. The studio is also used by local groups for meetings and events.

The venue has a popular Bistro, Prelude, which operates an online booking system; Prelude is a wonderful way to start your evening at The Octagon Theatre with a delicious pre show meal in a relaxing atmosphere.

The first floor gallery space also provides local groups and artists with a bright and spacious exhibition area.

The theatre's annual professional pantomime regularly attracts over 29,500 people from South Somerset and beyond, with award-winning producers Evolution Pantomimes bringing spectacular productions year-after-year. 2022 offers you the chance to see Dick Whittington.

The venue is one of the partners for the annual Yeovil Literary Festival which has grown from 2,000 attendees in 2013 to now welcome over 7,000, with over 50 events to come and see and listen to.

With plans to redevelop the venue from 2023, you can get involved and help fundraise for the redevelopment with our 'Name A Seat' campaign. From just £150, you can have a personalised plaque on a seat within our new auditorium. Contributing now means that you will be placed on our priority list and contacted to choose a seat for your plaque once the seating plan has been designed.

01935 422884 / octagon-theatre.co.uk



Westlands

Westlands Entertainment Venue is South Somerset's premier entertainment and conferencing venue. The venue was re-opened in 2017 after South Somerset District Council took on the management and refurbishment following a petition signed by local residents to make sure it remained open for the community. It is now a bright and bustling venue offering a space for local residents, visitors and businesses to meet, take part in classes or attend functions, screenings and events.

Managed by the same team as The Octagon Theatre, Westlands offers a complementary programme of fantastic live events including cinema screenings (featuring numerous large comfy sofas), party nights, festivals and more.

The venue is open Monday to Saturday and offers visitors free parking, free Wi-Fi and a great place to have lunch and meet friends. A new breakfast lunch menu has recently been created for 2022, so come down between 10am and 2pm daily for our food.

The venue has welcomed many local groups who hold regular classes on the stunning ball room floor – one of the best in the South West. Westlands boasts a range of versatile function spaces that are perfect for meetings, conferences, wakes, parties and events. These spaces are available to hire so whatever your need, we've got the space for you.

01935 422884 / westlandsyevovil.co.uk



Barwick Park Follies

Barwick Park has 4 follies - Jack the Treacle Eater, the Fish Tower, Messiter's Cone and the Needle.

The first three can be seen from Two Tower Lane, off the A37 just south of Yeovil, and the Needle is further down the A37 at the Halstock turning.

Jack the Treacle Eater (above) is a tall arch of rough stones surmounted by a round tower with a pointed cone roof and its entrance at the top of the arch. At the very top is a statue of Mercury recalling the servant lad, Jack, who apparently ran to London with nothing but a jar of treacle to sustain him.

The Fish Tower, 50 feet high, is adjacent to Two Tower Lane. Originally this folly had a large gold-coloured weather vane, in the shape of a fish, inside an iron cage.

Messiter's Cone, 75 feet high, stands on a squat cylinder cut into three arches and has a ball as a crown.

The eyeless Needle is a stark obelisk piercing the sky.



Things to do in and around Yeovil

Yeovil Recreation Centre and Athletics Arena

The top outdoor sport and recreation venue in South Somerset. From a relaxing picnic on the wide open spaces to an adventure on the Flagship Play Space you can spend all day at the Rec.

Whilst you're here why not have a round of golf on the Pitch & Putt or mini golf course? If that's all too much, take a break and relax with some refreshments from our Galley kiosk. For young adventurers the exciting Flagship Play Space has used the ideas of local young people to create an amazing play space including tree house walkways, a shipwreck, skull and snake themed tunnel slides and a zipline.

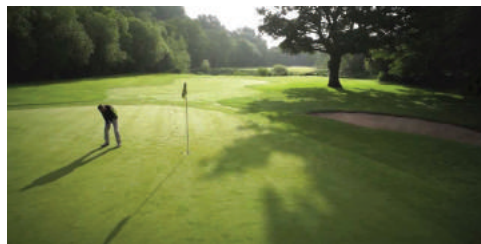
We also have a top class artificial grass pitch and athletics arena which are available to book.

Off Chilton Grove, Yeovil, BA21 4AW. 01935 462616. yeovilrec.co.uk/
leisurebookings@southsomerset.gov.uk.

Yeovil Town Football Club

See some top football action at Huish Park, the home of Yeovil Town FC. Check out www.ytfc.net for all the latest news and tickets.

Huish Park Stadium, Lufton Way, BA22 8YF.
 01935 423662 / ytfc.net / info@ytfc.net



Yeovil Golf Club

This 18-hole course has fantastic views and is situated off the A30 to the east of the town. There is also a 9 hole pay and play course. Sherborne Road, Yeovil, BA21 5BW. 01935 422965 / yeovilgolfclub.com.

Yew Tree Adventure Playground and Skate Park

The play area, which is located off Lysander Road / Forest Hill, includes a timber fort, aerial zip wire, wigwams, extra-high slide and buddy swing. There is also a skate park and basketball area.

Lysander Road, Yeovil, BA20 2PZ.

Yeo Leisure Park

Multiplex cinema, ten-pin bowling, health and fitness suite. Located just off the Town Centre. Old Station Road, Yeovil, BA20 1NP. yeoleisure.co.uk.

Milford Adventure Playground and Skate Park

Children's adventure play area incorporating skate park and multi-use games area.

Milford Park, Yeovil, BA21 4QD.



Rug Ratz

Children's indoor play centre.

Stourton Way, Yeovil, BA21 3AR. 01935 476989 / rug-ratz.co.uk.

Swan Theatre

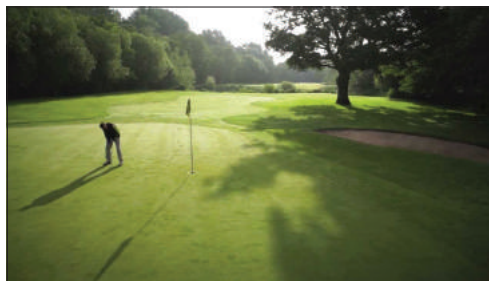
This small and intimate theatre on Yeovil's Park Street is owned and run by the Swan Theatre Company for staging its own 6 productions per year and those of other local amateur groups. For productions and tickets please visit the website.

138 Park Street, Yeovil, BA20 1QT. 07500 376031 / swan-theatre.co.uk / swantheatreboxoffice@gmail.com.

Milford Hall

Hall and meeting room available for community use.

Milford Park, Yeovil, BA21 4QD. 01935 382424 / yeovil.gov.uk/milford-hall / milfordhall@yeovil.gov.uk.



Yeovil Golf Club

Yeovil's Premier Sporting Facility

If you are a beginner or a regular golfer we have something to offer everyone

9 and 18 hole courses • Open 7 days a week

Driving range • Fully licensed clubhouse

Function / meeting room

Plus 15 discount reciprocal golf courses to play!

One of the largest golf pro shops in the south west

01935 422965 • yeovilgolfclub.com



A PLACE TO

EXPRESS YOURSELF

Unlock your child's potential

with our expertly led singing, dancing and acting classes for 4 - 18 year-olds

Find out more today:
stagecoach.co.uk/yeovil
yeovil@stagecoach.co.uk
07526 658471

STAGE COACH
Creative Courage For Life

ELEPHANT MOON

28 Vicarage Walk, BA20 1EX. 07745 344105 / elephantmoon.co.uk.

THE EMPORIUM

39 Princes Street, BA20 1EG. 01935 579482 / theemporiumyeovil.co.uk.

THE ENTERTAINER

63 Middle Street, BA20 1LQ. 01935 414559 / thetoyshop.com. *Toy shop.*

EPS

29 Vicarage Walk, BA20 1EX. eastvilleproject.org.uk. *Record shop.*

ERNEST JONES

12 - 14 Middle Street, BA20 1LY. 01935 474118 / ernestjones.co.uk. *Jewellers.*

F. HINDS

24 Middle Street, BA20 1LY. 01935 471568 / fhinds.co.uk. *"Jewellery and giftware chain."*

FIT & FURNISH LTD

The Old Vincent's Chambers, 25 / 26 Market Street, BA20 1HZ. 01935 412811 / fitandfurnish.co.uk. *Furniture store.*

THE FLOWER SHOP

5A Princes Street, BA20 1EN. 01935 472167 / theflowershopyeovil.co.uk.

GARY PYNER FRAMES

1 Church Street, BA20 1HE. 01935 473096 / garypynerframes.co.uk. *Picture frame shop.*

GEEK PORTAL

31 Vicarage Walk, BA20 1EX. 07570 016934. *"Figurine shop."*

GRAPE TREE

33 Middle Street, BA20 1LG. 01935 507050 / grapetree.co.uk. *"Health food shop."*

H. SAMUEL

4 Middle Street, BA20 1LZ. 01935 475934 / hsamuel.co.uk. *Jewellers.*

H&M

35 Vicarage Walk, BA20 1EU. 0344 736 9000 / hm.com. *"Chain retailer supplying on-trend clothing, swimwear, accessories and shoes."*

HAYS TRAVEL

8 Middle Street, BA20 1LZ. 01935 577295 / haystravel.co.uk. *Travel agency.*

HMV

16 Vicarage Walk, BA20 1EX. 0843 221 0369 / hmv.com.

HOLLAND & BARRETT

20 Vicarage Walk, BA20 1EY. 0330 058 2640 / hollandandbarrett.com. *Health food shop.*

THE HUDDLE

18 Vicarage Walk, BA20 1EX. 07557 305230 / southwestbumpsandbeyond.com. *"Baby store."*

ICELAND

Ivel Square, Quedam Shopping Centre, BA20 1EY. 01935 479862 / iceland.co.uk. *"Supermarket chain supplying frozen packaged foods."*

JD SPORTS

14 Vicarage Walk, BA20 1EU. 01935 312998 / jdsports.co.uk. *Sportswear store.*

JULIAN CHARLES

35 Middle Street, BA20 1LG. 01935 313143 / juliancharles.co.uk. *Bedding store.*

KAREN BAKER OF BOND STREET

20 Bond Street, BA20 1PE. 01935 478401.

THE LITTLE TREAT SHOP

30A Princes Street, BA20 1EQ. 01935 507739 / jessicacakesandbakes.co.uk. *Cake shop.*

LODERS

11 - 13 Union Street, BA20 1PQ. 01935 421503. *Family butchers.*



EASTVILLEPROJECT.ORG.UK

Unit 29, Vicarage Walk, The Quedam



Independent record store providing:

pre-loved vinyl, CDs and cassettes
merchandise and music memorabilia
hand-printed t-shirts and vintage clothing
turntables and hi-fi equipment
regular in-store gigs and dj sessions
recording studio and rehearsal space

*Pop-in for a chat, a browse, or simply to
hear some great sounds*

THE MAD HATTER

42 Princes Street, BA20 1EQ. 01935 471545.
"Fancy dress, novelties, toys and joke shop."

MARKS AND SPENCER

5 Middle Street, BA20 1LE. 01935 423150 /
marksandspencer.com.

MIKE MANNING AUDIO

9 Silver Street, BA20 1HW. 01935 479361 /
mikemanningaudio.com. *"Home audio store."*

MILES MORGAN TRAVEL

14 Middle Street, BA20. 01935 428488 /
milesmorgantravel.co.uk. *Travel agency.*

NEW LOOK

Quedam Shopping Centre, BA20 1EY. 01935
443460 / newlook.com. *Women's clothing
store.*

OFFICE WYSE

44 Princes Street, BA20 1EQ. 01935 433000 /
officewyse.co.uk.

THE OLD CINEMA HOME STORE

1 Court Ash, BA20 1HG. 01935 413413. *Charity
furniture and home store.*

PANDORA

17 Vicarage Walk, BA20 1EU. 01935 473371 /
stores.pandora.net. *Jewellers.*

POT DOODLES

6 Ivel Square, BA20 1EY. 07710 183891 /
potdoodles.co.uk. *Pottery store.*

POUNDLAND

20 Middle Street, BA20 1LY. 01935 432702 /
poundland.co.uk. *"Discount retail chain selling
groceries, toiletries, cleaning products and
more."*

POUNDLAND

7B Houndstone Retail Park, Western Avenue,
BA22 8YQ. 01935 421209 / poundland.co.uk.

PRIMARK

19 Middle Street, BA20 1LF. 01935 410229.
*"Discount fashion chain offering clothes and
accessories for all ages, plus homewares."*

REFINE & DESIGN

24 Vicarage Walk, BA20 1EX. 07949 141324 /
refineanddesign.co.uk. *"Gift shop."*

ROBERT DYAS

40 - 42 Middle Street, BA20 1LX. 01935 478683.
*"Retail chain selling DIY and kitchen products,
homewares, electrical and gardening goods."*

RYMAN

3 Middle Street, BA20 1LE. 01935 431305.

SEVENOAKS

14 Silver Street, BA20 1HW. 01935 700078. *"Hi-fi
and home cinema retail chain."*

SHOE ZONE

21 Middle Street, BA20 1LF. 01935 433729 /
shoezone.com. *"Shoe shop."*

SOUTH WEST SCHOOLWEAR

10 Wine Street, BA20 1PW. 01935 478178 /
swschoolwear.co.uk. *School uniform shop.*

SPORTS OF BOND STREET

15 - 16 Bond Street, BA20 1PE. 01935 423368.
*"Independent sports equipment and clothing
retailer."*

SUPERDRUG

15 High Street, BA20 1RQ. 01935 422829 /
superdrug.com.

THE SWEETERIE

83 Middle Street, BA20 1LN. 01935 475919.
Sweet shop and newsagents.

TAKE NO WRAP

Ivel Square, Quedam Shopping Centre, BA20.
01935 474826 / takenowrap.tillex.co.uk. *"Zero
waste shop."*

**YEOVIL
SUPER
SaTURDay**

17 September 2022

TRAMONTI

7A Westminster Street, BA20 1AF. *Italian delicatessen.*

TIMPSON

34 Middle Street, BA20 1LY. 01935 706915 / timpson.co.uk. *"Chain of locksmiths, also offering other services including engraving and shoe repairs."*

TIMPSON

Tesco, Queensway Place, BA20 1DL. 01935 471458.

TIMPSON

Morrisons, Lysander Road, BA20 2AU. 01935 423266.

TRESPASS

23 Middle Street, BA20 1LB. 01935 410061. *"Outdoor clothing and equipment shop."*

USC

2 - 4 Vicarage Walk, BA20 1EU. 0344 332 5881. *"Fashion chain."*

WALTER WALL CARPETS

34 Princes Street, BA20 1EQ. 01935 478100 / walterwallyeovil.co.uk.

WARD AND SIBLEY

103 Middle Street, BA20 1NA. 01935 474065 / wardandsibley.co.uk. *Jewellers.*

WARREN JAMES

30 Middle Street, BA20 1LY. 01935 424687 / warrenjames.co.uk. *Jewellers.*

WATERLOO MUSIC

16 Hendford, BA20 1TE. 01935 507330 / waterloomusic.shop. *"Award winning independent guitar shop."*

WATERSTONES

37A Middle Street, BA20 1LG. 01935 479832 / waterstones.com. *Book shop.*

WH SMITH + POST OFFICE

10 Middle Street, BA20 1LZ. 01935 426231.

THE WINKING FROG

17 Princes Street, BA20 1EN. 01935 508151. *Coffee shop.*

THE WORKS

25 Vicarage Walk, BA20 1EU. 01935 700436 / theworks.co.uk. *"Discount retail chain offering products including books, art supplies, games and stationery."*

YOURS

13 - 15 Vicarage Walk, BA20 1EU. 01935 479109 / yoursclothing.co.uk. *"Chain fashion retailer making and selling clothes and accessories for women in sizes 14 to 36."*

COW & APPLE
BURGERS CIDER GOOD TIMES

VEGAN OPTIONS
OVER 50 Varieties of CIDER

OUR MENU
IS AVAILABLE TO GO
TAKEAWAY

YEovil TOWN CENTRE
8-10 CHURCH STREET
YEovil
BA20 1HE

01935 433292
YEovil@COWandAPPLE.CO.UK
WWW.COWandAPPLE.CO.UK

**100% BRITISH BEEF BURGERS,
CHICKEN BREAST BURGER &
VEGETARIAN OPTIONS**

WE TAKE PRIDE IN SOURCING BEEF FROM A FARM THAT
RAISES THEIR COWS SLOWLY & RESPONSIBLY.

THEY MATURE OUTDOORS, ROAM FREE & GRAZE ON
NATURAL GRASS. WE THINK YOU'LL LOVE IT.



Len Copland Photography

NEWS, THEATRE, EVENTS AND
PORTRAIT PHOTOGRAPHY

Mob: 0771 577 0481

Email: len.copland@cloud.com

Twitter: @snapperlen

Instagram: @snapperlen

Facebook: Snapperlen



Food and drink

AKASH

101 Middle Street, BA20 1NA. 01935 410597 / akashyeovil.com. *Indian restaurant.*

ASK

15 Princes Street, BA20 1EN. 01935 321055 / askitalian.co.uk. *Italian restaurant.*

BEEFEATER

Key Market House, Middle Street, BA20 1LT. 01935 317017 / beefeater.co.uk. *"Pub-style chain serving up a menu of grilled meats and international favourites such as fajitas."*

BOMBAY DINING

4 Bond Street, BA20 1PE. 01935 507090 / bombay-dining.co.uk. *Indian restaurant.*

CAFE 50

50 Princes Street, BA20 1EQ. 01935 423763.

CAFE VIE

52 Princes Street, BA20 1EQ. 01935 474437.

CASTELLO

3 Park Road, BA20 1DZ. 01935 507878 / castellorestaurants.com. *Italian restaurant.*

THE CHARCOAL GRILL

43 South Street, BA20 1NN. 01935 410883 / thecharcoalgrill.co.uk.

CHOI'S KITCHEN

13 Silver Street, BA20 1HW. 01935 411145 / choiskitchen.co.uk. *Chinese takeaway.*

COFFEE #1

17 Middle Street, BA20 1LF. 01935 424393 / coffee1.co.uk. *Coffee shop.*

EARLS SANDWICH

12 Silver Street, BA20 1HW. 01935 412802 / earls-sandwich.co.uk. *Sandwich shop.*

FAVORITE

108 Middle Street, BA20 1NE. 01935 472742 / favorite.co.uk. *Fried chicken takeaway.*

FINCA

11 High Street, BA20 1RG. 01305 300400 / fincacoffee.co.uk. *Coffee shop.*

FLAME PERI PERI CHICKEN

48 Princes Street, BA20 1EQ. 01935 508080 / flameperiperi.co.uk. *Fast food restaurant.*

THE GORGE CAFE

15 Glovers Walk, BA20 1LH. 01935 422370

IDAMI

27 South Street, BA20 1NN. 01935 432888 / idami.co.uk.

KARMA BAR

4 - 5 Stars Lane, BA20 1NR. 01935 423158 / barkarma.co.uk.

KASPA'S DESSERTS

1 South Western Terrace, BA20 1NB. 01935 474748 / kaspas.co.uk. *Ice cream shop.*

KAZBAR

7 South Western Terrace, BA20 1NB. 01935 411388 / kazbaryeovil.co.uk. *"Cocktail and tapas bar."*

LES AMIS

1A Vicarage Walk, BA20 1EU. 01935 593208. *Café, bar, bistro.*

MAGIC SPICE

79 Princes Street, BA20 1EE. 01935 423091 / magicspiceindian.co.uk. *Indian takeaway.*

MAJESTIC WINE

Sherborne Road, BA21 4HA. 01935 474297 / majestic.co.uk. *"Retail chain specialising in wine by the case as well as bottles, beer and spirits, and tasting counter."*

MANDARIN

102 Middle Street, BA20 1NE. 01935 477888 /
mandarinba20.co.uk. *Chinese takeaway.*

MASSALA EXPRESS

119 Middle Street, BA20 1NA. 01935 507273 /
massalayeovil.co.uk.

MEM-SAAB

24 Market Street, BA20 1HZ. 01935 414103 /
memsaabyeovil.co.uk. *Indian restaurant.*

MORTIMER'S

3 High Street, BA20 1RE. 01935 471528 /
mortimersbakery.com. *"The family baker and
sandwich maker."*

MORTIMER'S

2 Gazelle Road, Lynx Trading Estate, BA20 2PJ.
01935 421342.

MUKTA BALTI

19 Bond Street, BA20 1PE. 01935 428888 /
muktabaltiyeovil.com. *Indian takeaway.*

MUNCHIES

98 Middle Street, BA20 1NE. 01935 414777 /
munchies-yeovil.co.uk. *Pizza and kebab
takeaway.*

NANDO'S

Unit 3, Key Market House, BA20 1NB. 01935
415782 / nandos.co.uk. *"Afro-Portuguese chain
restaurant serving flame-grilled chicken in
spicy chilli sauce."*

PALMERS FISH & CHIPS

19 Market Street, BA20 1HY. 01935 423437 /
palmersfishandchips.co.uk.

PALMERS FISH & CHIPS

Bernards, BA20 2FH. 01935 444644.

PAPA JOHN'S

17 - 18 Bond Street, BA20 1PE. 01935 427777 /
papajohns.co.uk. *Pizza takeaway.*

PIZZA HUT

Unit 4, Old Town Station Leisure Park, Old
Station Road, BA20 1NP. 01935 706606 /
pizzahut.co.uk. *"Family-friendly chain known
for its made-to-order pizzas."*

PIZZA PASTA MONDO

10 Westminster Street, BA20 1AE. 01935
700300 / pizzapastamondo.co.uk.

RAJ CUISINE

110 Middle Street, BA20 1NE. 01935 475757 /
rajcuisine.co.uk. *Indian restaurant.*

RHINO

105 Middle Street, BA20 1NA. 01935 420252 /
rhinofastfoodcafe.co.uk.

THE RISING SUN

61 Princes Street, BA20 1EE. 01935 476184 /
therisingsunyeovil.co.uk. *Chinese takeaway.*

ROYALTY

6 Union Street, BA20 1PQ. 01935 508288 /
royaltyonline.co.uk. *Takeaway restaurant.*

STAR TAKEAWAY

6B Stars Lane, BA20 1NR. 01935 415558 /
startakeawayyeovil.co.uk.

SUBWAY

84 Middle Street, BA20 1LT. 01935 471507 /
subway.com. *"Casual counter-serve chain for
build-your-own sandwiches and salads."*

SUBWAY

Tesco Extra, Queensway Place, BA20 1DL.
01935 413637.

SUBWAY

Unit 10, Western Avenue Pod, BA22 8YQ. 01935
474292.

SUSHI KING

7 Westminster Street, BA20 1AF. 01935 479225
/ sushiking.uk. *Sushi takeaway.*

TAMBURINO

8 - 10 South Western Terrace, BA20 1NB. 01935
700400 / tamburino.co.uk. *Italian restaurant.*

TEXAS ROCKS

70 Middle Street, BA20 1LU. 01935 477025 /
texasrocks.co.uk. *"Steak house."*

TROY KEBAB HOUSE

99 Middle Street, BA20 1NA. 01935 411779 /
love-takeaway.com.

UNION STREET BRASSERIE

6a Union Street, BA20 1PQ. 01935 507828.
Cafe.

VICEROY

100 Middle Street, BA20 1NE. 01935 421758 /
viceroyindianrestaurant.com. *Indian
restaurant.*

WAH YING HOUSE

113 Middle Street, BA20 1NA. 01935 476669 /
wahyinghouse.co.uk.

THE WILLIAM DAMPIER

97 Middle Street, BA20 1LN. 01935 412533 /
.jdwetherspoon.com. *"JD Wetherspoon pub
with party vibe in evening, for cask ales, meal
deals and kids' menu, plus free WiFi."*



Yeovil and the Railways

Yeovil is a key destination on regional railway routes from Bristol to Weymouth, and from London to Exeter.

Two stations serve the town, and offer a relaxing and scenic alternative to the car for days out to a great range of destinations.

Services from Yeovil Junction station to Salisbury, London and Exeter are run by South Western Railway (www.southwesternrailway.com) and from Yeovil Pen Mill you can go to Bristol, Bath and Weymouth with Great Western Railway (www.gwr.com).

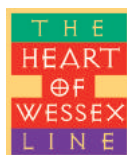
Both stations have knowledgeable and friendly staff who can help you to plan your journey and get the best value rail ticket. You can save money throughout the year with a

variety of railcards, and for groups of three or more people travelling together, ask about Group Save.

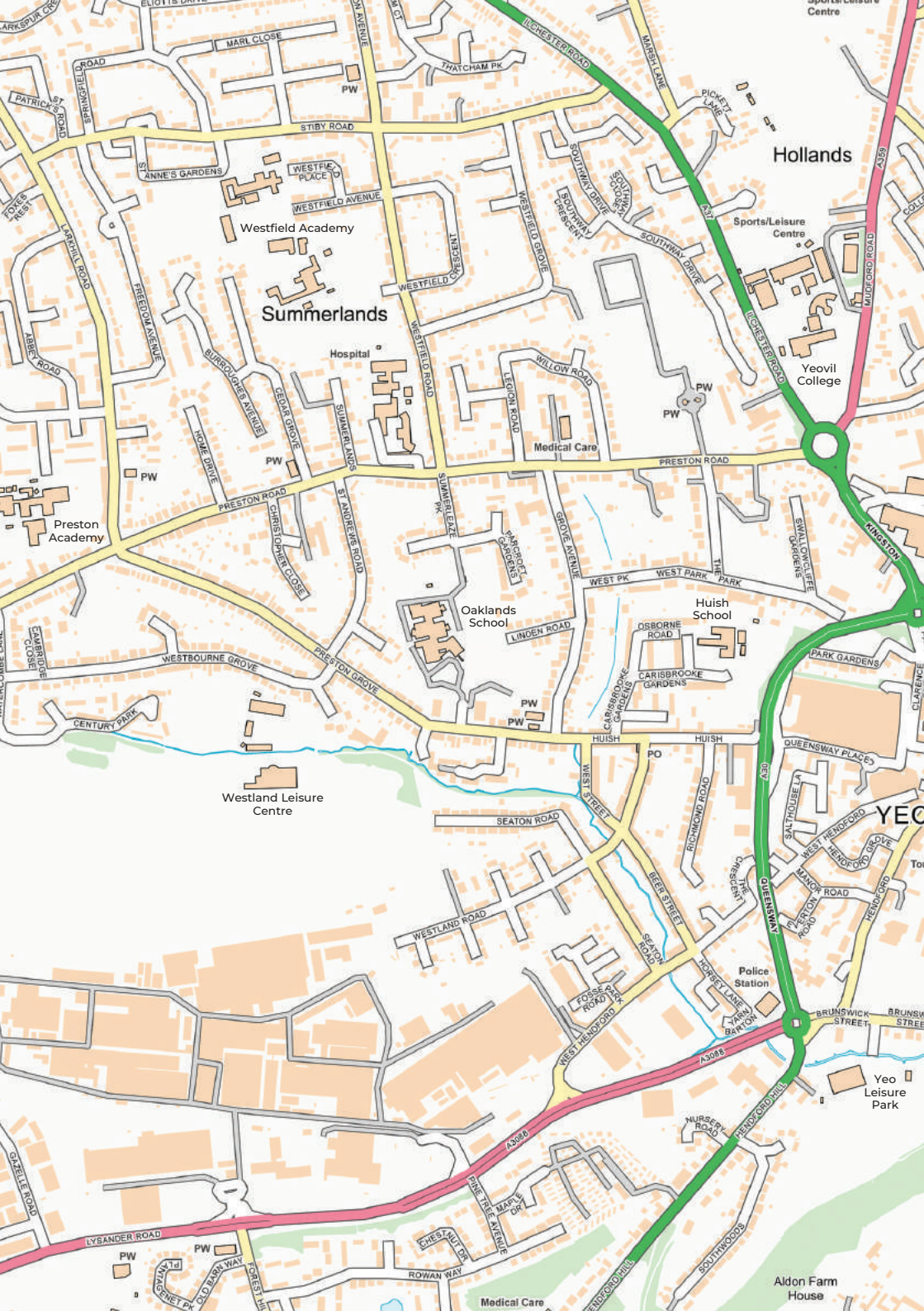
Community Rail Partnerships, who support volunteer station adoptions and work with local communities to highlight local events and attractions, have websites with tips and ideas for days out by train.

Yeovil Pen Mill station can be reached by a pleasant stroll or cycle ride through the country park.

Yeovil Junction is two miles from the town centre, and can be reached with the number 68 bus from the town centre which also calls at Yeovil Pen Mill.











Applin and Barrett Factory formerly of Newton Road, Yeovil. Applin & Barrett made the well-known St. Ivel brand of lactic cheese, plus sandwich paste and as shown possibly preparing pastry for meat products or dough for cheddar loaves believed to date from the 1940s.

A Short History of Yeovil

The name of Yeovil, which has had at least 70 variations of spelling, is derived from the River Yeo, dividing Somerset and Dorset at its south-eastern extent.

Evidence of early man is shown by the discovery of Bronze Age artefacts found on Wyndham Hill and Hendford Hill.

There are numerous examples of Roman discoveries; Westland Road is the site of a farmstead and settlement which probably continued after Roman times until Saxon days; an excavation at Lufton revealed a Roman villa site.

The Saxons were much in evidence in the Yeovil area and a Saxon church is known to have existed by the year 950.

A Saxon 'Hundred' (an administrative division of the county thought to have contained a hundred families) regularly gathered at a 'moot', or meeting, around a stone sheltered by trees at the crossroads now in Mudford Road which overlooked the whole of the domain. The moot is commemorated in the name 'The Hundred Stone' to this day and the stone can still be seen.

After the Norman Conquest, the Domesday survey of 1086 revealed 22 freemen occupying a 'tenement' or Town ship; this developed into a tiny self-governing borough, separated from the Manor of Hendford, by the twelfth century. The borough was placed under the lordship of the Rector of St John's Church with the day-to-day civil administration in the hands of a body of burgesses with a Portreeve, or Provost, at its head. At this time the centre of Yeovil became known as the Borough, which was then the market place.

In Medieval times, the Black Death took its toll in Yeovil; the workforce was greatly reduced and in 1348 the disease accounted for three vicars appointed between October and the following January.

In the late fourteenth century, the entire rebuilding of St John's Church took place under the direction of Robert de Sambourne, Rector of Yeovil. The building seen today - a superb example of the early perpendicular style of architecture - is much as it would have appeared soon after its completion in the early 1400s. Of particular interest is the east window depicting the Last Supper. Judas Iscariot is depicted, very unusually, with a black halo.

Yeovil was a market town from its earliest days. In 1633, Thomas Gerard wrote that the market was 'one of the greatest I have seen'. The Market House and a butcher's 'shambles' stood on much of what is now the open space in Yeovil known as the Borough. Difficult times followed, financially, however as the Town along with many others was required to pay a levy to King Charles I. In addition, two devastating fires in 1623 and 1640 did tremendous damage to the small Town, causing further hardship and loss of dwellings to scores of people.

The Civil War broke out in 1642. Local hardship and resentment at the King's levy fostered support for the Earl of Bedford, who besieged the King's forces under the Marquis of Hertford in Sherborne Castle with a force of 7,000. There were several indecisive skirmishes, however whilst garrisoned in Yeovil the Earl received news that the Marquis's troops had gathered on the hill above the entrance to the Town. The Earl mustered his forces and the Battle of Babylon Hill ensued. The Royalist forces were made to retreat back to the safety of Sherborne Castle and thus passed Yeovil's brief moment of fame in the war.

The Plague again took hold in 1645, said to have been brought in from London by people fleeing its ravages. So many of the townspeople perished that grass grew in the streets. A petition presented to Ilchester Quarter sessions in 1647 stated that 'manie hundred souls had died' and that no-one would undertake to bury the dead. Later that year a similar petition was presented by the Yeovil Overseers of the Poor at Wells Sessions complaining of being unable to meet the increased demands on them, not only from children and widows resulting from the plague but also because of the 1640 fire which had rendered so many homeless and impoverished. There was further resentment against being asked to contribute towards the maintenance of Cromwell's army in Ireland.

Under Oliver Cromwell's Commonwealth, Yeovil was not a prosperous or happy place. Many alehouses were closed, certain 'sporting' events were banned, neighbour watched neighbour for signs of Royalist sympathies and even church weddings were prohibited for a while.

In 1660 the restoration of the monarchy under Charles II was greeted with relief in the Town and there was a gradual return to former relaxations and prosperity as agriculture and the market flourished. A lending library was also established and there was free education for a number of children in the grammar school.

The Portreeve gradually increased his responsibilities, his powers and the dignity of his office. He acquired a new mace in 1776 and it was gilded the following year. This is the mace still used on ceremonial and civic occasions by Yeovil Town Council's Macebearer.

By the early 19th Century the bounds of Yeovil's ancient manorial borough represented only about a third of the rapidly expanding Town, which had become famous for the gloving industry. The increased population in that third alone rendered inadequate the powers possessed by the old governing body.

In 1830, Town Commissioners were appointed under parliamentary authority for the purpose of 'paving, lighting, watching, watering, repairing, widening and otherwise improving the streets, lanes and other public passages and places within the Town of Yeovil, and for regulating the Police thereof. The Commissioners also built a house to accommodate their Surveyor and Police force (all three of them!) in a building in Union Street - now the Town House - which houses the present Yeovil Town Council offices.

Parliamentary Reform was also in the air at this time. Civil Riots broke out in Yeovil in 1831 when the second Reform Bill was rejected and a reform candidate was defeated at Blandford. Yeomanry troops from Mudford and Martock were called out and some of the crowd were arrested and taken to the Mermaid Hotel. As a mob assembled and broke all its windows, the 3rd Dragoon Guards were called out to assist the Yeomanry and the riot was quelled. Grateful townsfolk presented commemorative jugs to officers of the local Yeomanry - five inscribed 'riot jugs' are in the care of the South Somerset Heritage Collection whilst another is held at the Town House.

Special Commissioners were appointed in 1846 following increasing demands for an extension of the authority of the old corporation. This body cleared the Borough of the old Market House and shambles and commissioned the building of a new Town Hall in High Street, opened in 1849. Manorial rights acquired from the Phelps family were then passed to the Commissioners.

In 1854, the Municipal Borough of Yeovil was created by Act of Parliament, following further demands for an increase in local powers to satisfy the needs of the rapidly growing Town. The last Portreeve, Benjamin Ryall, handed over the mace and ancient borough seal into the custody of the new corporation consisting of twelve councillors with John Ryall Mayo as the first Mayor and John Batten as Town Clerk. In 1882 a chain of office was added to the Mayor's regalia.

Yeovil Town Station was opened in 1861 and closed to passenger traffic in October 1966. The 1860 Foundation Stone is visible close to the entrance of Yeo Leisure Centre.

The first Council meetings were held in the Town Hall until 1898 when a building known as the Borough House, standing back from High Street was converted for use as offices with a council chamber. This house was used by the Council until 1924 when it was pulled down for the construction of King George Street and the building of new Council Offices.

Yeovil grew rapidly in the late 19th Century, its rural and agricultural surroundings had made it the market Town for the produce of South Somerset and new municipal services included water, sewage disposal, a hospital, public baths, a cemetery, allotments, recreation grounds, public lighting and a local fire brigade. The coming of the railway had also vastly increased the Town's transport links. Yeovil had an important cattle market, was celebrated far and wide for its gloving industry and its engineering works at Petters foundry (now the Leonardo site) was soon to be given a tremendous boost by the dawn of the aviation age in the early 20th Century. Not many people know that one of the first oil engines was made in Yeovil by Petters.

In two World Wars, Yeovil played its part. Servicemen and women served in every theatre of war and many lives were sacrificed. The Town suffered many losses from sporadic



Contractors' Sky-Hook

Whether the load is carried inbound or outbound (on the quick-release belly hook) the Westland Widgeon takes its half-ton load over trackless forests, tundra and hillside.

On a shuttle service over, say, a fifty miles portage, the daily delivery of plant, equipment or men can make the 'impossible' into an economic success.

May we tell you about this and much larger Westland Helicopters which are doing such pioneer industrial jobs all over the world?

WESTLAND

The Hallmark of British Helicopters

WESTLAND AIRCRAFT LIMITED YEovil · SOMERSET

enemy bombing in World War II, including its fire station, and the Westland aircraft works was a prime target. In 1919 the Borough War Memorial was erected, the scene of the Town's annual Remembrance Day Ceremony, followed later by a memorial at Preston Road and other memorial plaques in the Town.

By the 1930s Westland Aircraft of Yeovil was established as a manufacturer of military and civilian aircraft. On 3 April 1933 two Westland aircraft, designed and built in Yeovil, made the first ever flight over the summit of Mount Everest. Tensing and Hillary, the summiteers used oxygen-breathing apparatus developed by Normalair of Yeovil, then a subsidiary of Westland. The Westland G-Lynx Helicopter flew a 15km course between Hartlake Bridge and West Huntspill, across the Somerset Levels and achieved an average speed of 400.87 km/h (249.1 mph). This speed record, set on 11th August 1986, made it the world's fastest helicopter.

In 1935 a fire destroyed the Town Hall in High Street. A scheme to build a new Town Hall and Civic Centre at Hendford Manor House met some opposition and the outbreak of war meant it was never built (a watercolour of the architect's vision still exists, however, at the

Town Council offices). The Law Courts were built in Petters Way in 1939, Maltravers House was constructed to house local authority and government departments in 1969 and in 1974 the Johnson Hall (now including the Octagon Theatre) was erected as a civic entertainment centre.

Post-war projects also gave Yeovil a new dual carriageway through the town centre to meet the heavy demands of motorised traffic, a new pedestrianised shopping centre with multi-storey car park, a college of further and higher education, a purpose built police station and many new housing areas to meet its continued population growth. With the invention of the helicopter (1947), the Westland site rapidly adapted to become a supplier to national and international civil and military markets.

Local Government reorganisation in 1974 spelt the end of the old Yeovil Borough Council. Amalgamation with various local rural districts produced a new Yeovil District Council, later re-named South Somerset District Council with subsequently built new offices at Brympton Way. A municipal body of Charter Trustees with a Charter Mayor had also been formed in 1974 but in 1982, at the culmination of a long and successful campaign, the Trustees were superseded by elevation to a new Yeovil Town Council with parish status.

In 1985, Yeovil Town Council was granted the use of the armorial bearings originally obtained from the Corporation in 1954 on its 100th anniversary. In 2004, the Council celebrated 150 years of local democracy since the inception of the first Yeovil Municipal Borough and Town Mayor in 1854 and in 2012 the Council celebrated the 30th anniversary of its formation as a new town council.

Of necessity, this is a shortened version of Yeovil's history - thanks are extended to Jack Sweet (local historian) for contributing this information. Further details may be obtained from Yeovil Public Library (0300 123 2224) in King George Street, which has an extensive local history section.

Another source of information is the Yeovil Archaeological and Local History Society (yalhs.org.uk or contact details at the library).

For fascinating displays of Yeovil's history, a visit to the South Somerset Heritage Collection is a must - see page 29.



Yeovil's Virtual Museum

Local research historian Bob Osborne has created a wonderful collection of information about Yeovil through the ages. Starting as a retirement project in 2012, *The History of Yeovil's Pubs* was expanded to include a wealth of information about the history of Yeovil's places, people, buildings and stories.

In 2021 the A-to-Z of Yeovil's History website (www.yeovilhistory.info) was rebranded as Yeovil's Virtual Museum. Bob says, "It is still a work in progress - unfunded, free to use, with no advertising - and updated almost daily, to record much of the history of Yeovil and its people. The website currently has been viewed in 134 countries with over 3,500,000 page views, and presently contains more than 2,650 pages (equivalent to over 12,500 A4 printed pages) and over 11,500 images."

The site uses internet technology to embed links within each page to enable the reader to follow an infinite number of threads to suit their interest. The 'A-to-Z' matrix, on every page, leads to listing pages for subjects starting with each letter. Various 'Major Themes', again on each page, gather pages into themes, such as 'People' or 'Places'. There are also several 'Minor Themes', such as the 'Document Chest', 'Parish Registers' and 'Family Trees', as well as special features accessed from the Home Page. As a website designer, Bob's idea was to enable the user to find what they are looking for within three clicks of their mouse.

Yeovil Town Council is extremely grateful to Bob for all his work in researching, collating and updating the website.

Historic Plaques

To help Yeovil celebrate the Millennium, the Town Council affixed historic 'blue' plaques to a number of buildings across the Town Centre. The plaques are a fun way of learning about the past use of many of Yeovil's most famous landmarks.

Each plaque explains the historic significance of the building to which it is attached.

These include Penn Villa in Penn Hill, which was built around 1840 and is the former residence and dental surgery of William Hunt and his son William Alfred, 19th century pioneers in the use of dental anaesthetics. The premises are still used as a dental surgery today.



In 2013, an additional plaque was specially commissioned to commemorate the visit of Her Majesty the Queen and His Royal Highness the Duke of Edinburgh to Yeovil as part of the Queen's Diamond Jubilee Tour of the West Country. The plaque was installed at Pen Mill Railway Station to mark the location of their arrival in the Town.

A free leaflet has been produced, in the form of a walking trail, highlighting the location of each plaque and giving the background to the historic connection of each building.

Copies are available from the Town Council's Offices at 19 Union Street, and Yeovil Library in King George Street.

A J Wakely & Sons

*Independent Family Funeral Directors
and Monumental Masons*

– 24 Hour Service –

Private Chapels of Rest

Golden Charter
Funeral Plans

www.ajwakely.com

33 Sparrow Road, Yeovil Telephone: 01935 479913

Please contact Clive Wakely, or a member of our dedicated team for any advice or guidance.





The Borough and part of High Street, original photograph by W.S. Rendell, c. 1914
© South Somerset Heritage Collection

South Somerset Heritage Collection

The South Somerset Heritage Collection at Lufton, Yeovil stores objects and photographs concerning Yeovil and South Somerset's history.

The objects range from Roman mosaics and other archaeology to a costume collection dating from the eighteenth century, a firearms collection, riot jugs, Angel Inn Panel and everything to do with the history of gloving.

The collection also includes Queen Victoria's hat, stockings and chemise. The earliest photograph in the collection dates from the 1860s and was taken from outside the old 'Beales' building looking down towards the Octagon Theatre.

The South Somerset Heritage Collection is located at 7 Artillery Road, Lufton Depot, Yeovil, BA22 8RP. Opening hours are 9am - 5pm, Mondays to Fridays throughout the year. Visits by appointment please. Charges apply for answering enquiries and photographic reproduction for research and commercial purposes.

Donations of objects and photographs of the local area are gratefully received.

01935 462855

visitsouthsomerset.com/explore

heritage.services@southsomerset.gov.uk





Yeovil Town Council

History

On 3 July 1854, an Act of Parliament was passed which created a municipal borough in the Town of Yeovil. Under the Act, a Burgess roll was prepared for the first municipal election of councillors to serve on the new Corporation, and the Mayoralty was established.

For over a century, the Town was administered by Yeovil Borough Council. This came to an end in 1974 when local government was re-organised and the Borough Council was abolished.

Between 1974 and 1982, Charter Trustees were elected to look after the civic interests of the Town. However, it quickly became apparent that the Town needed its own Council to look after its affairs and, after a long campaign, the Government acknowledged the case for a separate Town Council for the former Borough.

The Town Council was formed in 1982, meeting initially at Petters Way, then Preston Road and then Brympton Way. The Town House was acquired in 1989 and all meetings are now held in the Council Chamber at these premises.

Locally elected and locally funded, the Town Council provides Yeovil with a democratic structure, which serves the interests of the Town and is directly accountable to its people.

The Town House

The Town House was originally built in 1849 by the Town Commissioners to provide a Police Station and a residence for a "Superintendent", who was also the Town surveyor and rate collector. Taken over by the County Constabulary in 1857, the building remained a police station until 1938.

After many years of multiple uses, Yeovil Town Council acquired the building and, after restoration and conversion, re-opened with a

council meeting on the 140th anniversary of the first meeting held there by the original Town Commissioners.

The adjoining building was purchased in 1994 and converted into the Mayor's Parlour, which is situated on what was the exercise yard in front of the three police station cells. The cells still exist – though they are no longer used for their original purpose!

The Town House has meeting facilities accessed via a lift to the first floor, a wheelchair accessible toilet including baby changing facilities, a hearing induction loop and disabled parking provision in front of the building.

Anyone wishing to learn more about the way the Town Council operates is welcome to contact the Town Council: yeovil.gov.uk

Yeovil Town Council Committees

The activities and responsibilities of the Town Council have grown steadily over the years, and most of its work is overseen by various Committees appointed by the Council. The powers and duties of these Committees are set out below:

BUILDING AND CIVIC MATTERS

Management of recreational and leisure facilities including community halls. The Committee oversees a variety of community safety initiatives, is consulted on traffic regulation and traffic calming and is responsible for the management, repair and maintenance of the Town House, Milford Hall and public toilets facilities. It also looks after the war memorials and the Millennium clock.

GROUNDS AND GENERAL MAINTENANCE

Management of most of the open spaces and play areas in the Town and the management of over 300 allotments on a number of sites owned by the Town Council. The Committee also keeps a watching brief over the Sunningdale Doorstep Green and Yeovil Cemetery, of which the Town Council is the principal owner.

PLANNING

The Town Council is consulted on all planning applications within the Town area and this Committee makes recommendations to the local Planning Authority.

POLICY, RESOURCES AND FINANCE

Dealing with matters concerning policy, resources and general finance decisions on behalf of the Town Council, this Committee also determines applications for grants from the local groups and organisations, oversees personnel issues and generally advises the Town Council on corporate matters.

PROMOTIONS AND ACTIVITIES COMMITTEE

Overseeing the delivery of a variety of related activities, initiatives and events directly and in partnership with other stake holders in the Town, including Yeovil in Bloom, the annual Super Saturday celebration, Love Yeovil, the Town Centre Street scene and the Christmas Lights display. The Committee is also responsible for the publication of the Town Guide and other promotional literature, customised souvenirs, the use of the Town Crest and the work of the Town Crier.

For further details about the Town Council and its Committees contact the Town Clerk on 01935 382424.



Mace Bearer

The role of Mace Bearer is to support the Mayor at civic functions and engagements. The Mace Bearer carries a ceremonial mace which is a highly ornamented staff. It is carried before the Mayor in civic ceremonies symbolically representing the Mayor's authority. The mace, as carried today derived from a mace used as a weapon.

Yeovil's mace can be dated back to at least 1776, when Thomas Hobbs was Portreeve of Yeovil. A portreeve is the title of an historical official possessing political, administrative or financial authority over a town.

Mayor's Charities

Mind in Somerset

We are here to make sure anyone with a mental health problem has somewhere to turn for advice and support. Our core purpose is to provide services and support to anyone affected by mental illness, improving their quality of life and wellbeing.

Through our 24hr Mindline service, Crisis safe space, Peer support groups, Garden, Art therapy and much more there is a way in for everyone and a service for everyone. We have an open door and treat everyone as individual, ensuring the right support, at the right time in the right way.

We have offices in Taunton, Yeovil, Bridgwater and Shepton Mallet as well as groups and services across the county. We have seen a massive increase in demand for our services throughout the pandemic that is only continuing. We couldn't continue to deliver these services without the support of our local community, so we are incredibly grateful for the support and recognition shown by the Mayor of Yeovil. Thank You!

01935 474875 / mindinsomerset.org.uk / info@mindinsomerset.org.uk.

SSAFA - the Armed Forces charity

SSAFA understands the unique demands of service life, whether it's on UK soil or overseas. Support is available for people at any stage in their military career; from the youngest recruit to the oldest veteran – no one's service is ever forgotten. We have more than 5,000 trained SSAFA volunteers who provide personalised, face-to-face support to those in need. In Somerset, our trained Caseworkers work with each person to find out exactly how we can help. Once we've assessed what is required, we'll help the individual or family access the support they need. This may just be someone to listen to them, but, more often than not, we access financial assistance from statutory and military benevolent funds or foundations that we work with. In addition, we signpost to our other charity partners who can give much needed assistance to help people get their lives back on track. Somerset's proud military history is reflected in the many people we help and even during 2020 and despite Covid,

we assisted 300 clients to improve their health and well-being. We are keen to raise the funds which we need to keep our Somerset team going and fundraising throughout the county in the form of concerts, golf days and open gardens means that we are self-sufficient. By supporting SSAFA, you are supporting the history of our county and country. Thank you!

020 8938 3633 / ssafa.org.uk / supporter@ssafa.org.uk.



Town Criers' Competition

Town Criers from far and wide come to Yeovil each year to keep up the ancient tradition of Crying and compete in the Annual Town Criers Open Competition.

All are members of the Ancient and Honourable Guild and enjoy a fantastic day as guests of Yeovil Town Council proving a colourful and warm spectacle to entertain shoppers throughout their day. Each competitor performs their home town Cry and a Cry of their own choice in the town centre in the presence of the Mayor and judges.

The formal system of Town Criers dates back to the Middle Ages when a reliable and trusted person with a clear, loud voice was required to keep citizens informed of matters of national and local importance. The historical significance of the Town Crier is greatly valued and is celebrated at this event, which brings colleagues together from all over the country.



Town Council Allotments

Yeovil Town Council has approximately 320 allotment plots on 11 sites across the town.

The benefits of having an allotment include:

- ◆ Good source of fresh fruit and vegetables, and therefore a healthy diet
- ◆ Less contact with pesticides etc if you grow organically
- ◆ Opportunity to spend time outside enjoying nature
- ◆ Sense of achievement and well-being
- ◆ Giving your mind something positive to focus on
- ◆ A chance to learn
- ◆ Reduction in stress
- ◆ A chance to escape the pressures of modern living

- ◆ Helps community spirit and offers an opportunity to meet people from all walks of life
- ◆ Environmental benefits by providing green spaces and wildlife habitats
- ◆ Gardening is a good form of exercise
- ◆ A chance for children to learn where food comes from

Who is eligible for an allotment?

You must be aged 18 years or over and not already have an allotment tenancy with Yeovil Town Council.

For further information or to discuss allotments, please telephone 01935 382424, or email ytic@yeovil.gov.uk,

yeovil.gov.uk/allotments





Yeovil in Bloom

Yeovil is in its 26th year of entering the RHS South West In Bloom Competition; progressing from winning a commendation back in 1996 to winning 11 consecutive golds and individual awards for Best Portfolio, Best Youth Scheme and Best Municipal Display, as well as representing the South west in the 2019 National Finals where we were awarded a prestigious Silver Gilt.

Initiated and funded by Yeovil Town Council, the In Bloom initiative exists to bring our community groups and individuals together: to celebrate the work they achieve throughout the town and to enhance the quality, biodiversity and attractiveness of our town.

The town's entry includes contributions from local businesses, schools, residents, Yeovil Country Park and Community groups, all of which help to create a sense of civic pride and inspires and encourages businesses and residents to take an active role in the development and protection of their environment.

The floral displays are designed and maintained by South Somerset District Council's Environmental Service under the direction of the In Bloom Steering group.

These displays along with our locally sponsored floral baskets and spring bulbs attract visitors from all over the South West year after year.

Residents can also participate by entering a local competition that celebrates gardening, creative ideas, innovation, biodiversity and skilled horticulture. All of these efforts enhance the overall entry into the South West in Bloom competition.

Groups get together to litter pick, create community gardens, tend allotments, grow and plant floral bedding displays, hanging baskets and fruit and vegetables. They raise money by organising coffee morning and local events. This not only starts to create a feeling of an inclusive community but inspires more challenging projects. The Royal Horticultural Society's 'It's your Neighbourhood Scheme' encourages and celebrates these groups and awards annual recognition for these endeavours.

If you would like more information about Yeovil in Bloom please contact Stephen Fox on **01935 462828**.

facebook.com/Yeovil-in-Bloom-272779069522220/



Love Yeovil

Love Yeovil is a business led and partner based organisation, responsible for promoting Yeovil by raising awareness and in doing so attract more visitors and guests who stay longer, spend more, and recommend the town to other potential visitors.

Working in partnership with South Somerset District Council, Yeovil Town Council and Yeovil Chamber we are striving to promote the retail opportunities and events to improve the town.

Love Yeovil helps to promote many high profile events with the town centre, particularly the annual Christmas lights switch on, Super Saturday and the Yeovil Half Marathon.

facebook.com/LoveYeovil/



Yeovil Chamber

Yeovil Chamber of Trade and Commerce continues to be the go-to representative body for businesses in Yeovil and across the South Somerset area, currently representing the interests of over 180 member businesses across all sectors and sizes, ranging from one-person enterprises and start-ups, through to our major employers and national brands.

A wide and diverse range of high-quality, informative networking events, and sector specific meetings allow Yeovil Chamber to deliver unrivalled insight and support for our member businesses and the wider business community. These include focussed groups looking at Manufacturing, Hospitality, Social Care, Professional Services and Digital industries as well as our links to Education, Retail and Leisure. We also believe in celebrating amazing local businesses at our annual Business Awards and Business Fairs.

Through its strong working relationships and regular dialogue with local and regional government bodies and major industry and education stakeholders Yeovil Chamber is a part of the decision-making process across Yeovil and beyond, and regarded by Local Government as a key stakeholder in the prosperity of Yeovil and it's area of influence.

Benefits of Chamber membership:

- ◆ Regular networking events - socialise and exchange ideas and opinions with other like-minded business people
- ◆ Single, big voice to lobby for local, regional and national business issues
- ◆ Strong, active social media presence, broadcasting member events and news to 2,000+ other business connections
- ◆ Promoting Yeovil as a good place to live, work and play
- ◆ Representing the concerns of business people, to those who can make positive change
- ◆ Trusted information and advice to members
- ◆ Regular press and travel bulletins
- ◆ Inter-member discount services

If you're in business, it pays to be connected.

Visit yeovilchamber.org or email

hello@yeovilchamber.org to join in and make a difference, to your town - and your business.



Town Twinning

Town Twinning seeks to bring together the people of Yeovil with those in our twinned towns: Herblay in France, Taunusstein in Germany and Samarate in Italy.

Yeovil Twinning Association is a voluntary body whose aims are to promote exchanges of individuals and groups between Yeovil and its twin towns, giving those who take part the opportunity to learn more about the culture, language and people of another country.

Anyone wishing to join the association or find out more about twinning should telephone **01935 429944** or email highlea46@msn.com



Yeovil District Hospital

Yeovil Hospital is a cornerstone of the local community, providing care for 200,000 people from across Somerset and Dorset. With a vision to 'care for you like a member of our own family', incredible teams of staff and volunteers work tirelessly to make Yeovil hospital one of the best in England. One of the highest performing Trusts in the country for surgery waiting times, A&E treatment, and stroke care, the hospital's award winning work with GPs is helping to ensure Somerset's health and care system is ready and able to meet the challenges of the future.

Help support your local hospital by becoming a member and...

- ◆ Receive exclusive email updates with the latest hospital news
- ◆ Receive a range of high-street discounts exclusive to NHS staff, members and carers
- ◆ Attend exclusive members events to hear from hospital experts, and senior leaders
- ◆ Be among the first to find out about hospital jobs and volunteer opportunities
- ◆ Take part in exclusive surveys and polls to help shape NHS services
- ◆ Help decide who makes decisions about Yeovil Hospital

To become a member, visit yeovilhospital.co.uk/become-a-member/, fill out the form and we will send you updates, details of discounts, surveys, and event invites!



Shopmobility

Shopmobility schemes actively encourage inclusion and equality by providing a variety of equipment, which enables people to access their local centre either independently or with family and friends.

Shopmobility is for anyone young or old, whether their disability is temporary or permanent. It is available for those with injuries, long or short term disabilities - anyone who needs help with mobility.

Shopmobility is about the freedom to get around and having your independence. You do not need to be registered disabled to use the service.

Yeovil Shopmobility lends manual wheelchairs, powered chairs and powered scooters to members of the public with limited mobility, to shop and to visit leisure and commercial facilities within the town or shopping centre.

Long term hire of transportable equipment is also available.

Yeovil Shopmobility is situated in the Quedam Shopping Centre Car Park.

For more information or to use the service telephone **01935 420889** or visit our website yeovilshopmobility.co.uk

Wellbeing South Somerset

Are you looking for local groups, activities and services that could help you to manage your health and wellbeing?

Wellbeing South Somerset is a website designed to promote good health and wellbeing in South Somerset. It features a huge directory of local support, from meet-ups, to walking groups, to condition-specific support groups, and even housing and debt advice.

Visit wellbeingsouthsomerset.org to access the huge range of support available in South Somerset.

Youth Services

Youth Services in Yeovil involve Youth Clubs and follow up sessions, and the Youth Council.

Yeovil Town Council works with YMCA Mendip to provide youth services within Yeovil. YMCA Mendip provides Youth Clubs and follow up sessions in the communities of Westfield and Milford.

Both Westfield and Milford Youth Club have achieved Somerset County Council's 'Benchmark level Safe and Welcoming' which ensures that Youth Clubs provide a safe environment for the young people who attend.

Plans are underway to establish and develop a Youth Council. The Youth Council will be developed to encourage young people to participate in local government, enabling them to voice their concerns and be empowered to take decisions and action to improve their local communities. The Youth Council will be democratically elected young people who represent young people between the ages of 12 and 19.

If you would like further information, please contact the Town Clerk at Yeovil Town Council.

Fostering

Whether you're new to Yeovil or a long term resident, if you're interested in finding out more about fostering we'd love to hear from you.

There are nearly 500 children and young people in care who need safe and stable homes. If you could offer a child that foster home, we offer you a competitive fee, great training and support, plus extra rewards.

Call us on 0800 587 9900, visit our website or come to an information evening near you.

You can also make a difference by spreading the word. Join us on Facebook and Twitter (@fostersomerset) or print and share a poster from our website 'downloads' page.

fosteradoptsomerset.org.uk



Spark a Change

With busy lives, it can be hard to find time to volunteer. However, the benefits of volunteering can be huge! We know that volunteering can make a big difference to other people, worthwhile causes, and the whole community, but the benefits can be even greater for you!

Volunteering can help you to find friends, learn new skills or enhance your career. It can also improve your mental and physical wellbeing. You don't have to offer a long-term commitment or a huge amount of time, either. Whether you'd like to help out on a regular basis, or get involved in a one-off activity, project or event - we can help you to discover your ideal opportunity.

You could get involved in:

- ◆ Conservation
- ◆ Animal welfare
- ◆ Befriending
- ◆ Retail
- ◆ Sports
- ◆ Marketing and PR
- ◆ Plus much more!

Whatever your motivation, skills or interests, volunteering can spark a positive change for you - and your community!

Visit sparkachange.org.uk or call Spark Somerset on **01458 550973** to find out more.



Secondary, Higher and Further Education

Westfield Academy

At Westfield Academy, we see the qualities in each and every child and pride ourselves in creating a school community in which our students feel valued. We see educating children as a privilege that brings with it the responsibility to provide the best all-round education possible. Our STRIVE values - Scholarship, Teamwork, Resilience, Integrity, Versatility & Empathy - are actively encouraged throughout all areas of school life.

Happy children are more likely to be successful, and working in an environment of high expectations can achieve more than they believe possible of themselves. We occupy a green and attractive site where parents know their children will be well looked after and encouraged to be the best they can be. We have an excellent record of academic achievement and a wide-ranging curriculum that provides opportunities for all students.

We use a variety of approaches to teaching and learning across a broad curriculum offering a wide range of subjects at KS4, supporting their independence and offering a self-tailored education to suit their strengths, interests and future aspirations. In recent years we have added qualifications in Health & Social Care, Travel & Tourism, Photography and Business & Enterprise.

Continually striving to improve and build upon our current facilities make our academy an exciting and inspiring place for all. The Creative Arts departments are equipped with many state of the art facilities such as our very own recording studio, 300 seat theatre, and dance studio complete with sprung floor. In the Sports department, along with our existing 3G astro turf pitch, floodlit tennis and netball courts and refurbished sports hall, we also boast the addition of an inflatable sports dome.

We are very proud of Westfield Academy and would encourage you to come and visit us. Our students and staff would be very pleased to show you around and answer any questions you may have.

Simon Dallimore, Headteacher

01935 423747 / westfieldacademy.co.uk

Buckler's Mead Academy

At Buckler's Mead we believe in an 'Inspiring Education for All' and aim to provide this through a strong sense of community, providing all of our students regardless of age, ability, or background a richness of opportunities.

We believe school should be an enjoyable place to come every day, which is full of opportunities for success.

Our curriculum offer is broad and balanced and ensures every student has the opportunity to develop a deep knowledge of each and every subject area.

We have high expectations of all our students and support them to achieve the very best they can, while at the same time recognising that young people develop at different rates, have differing hopes and ambitions, and will go onto a range of career paths.

We aim to ensure that young people are exposed to a wealth of opportunities both within and beyond the classroom in an academy that places a strong emphasis on the development of well-rounded individuals of whom the staff and parents can feel justifiably proud.

Visitors regularly comment on the warm, friendly and positive relationships between staff and students and within the student body itself, which are immediately apparent and a hallmark of Buckler's Mead. Young people learn in an environment where creative and engaging lessons are delivered by a dedicated team of staff.

Our expectations extend beyond the classroom to include attendance, punctuality, uniform and attitude to learning, to ensure that everyone has the opportunity to succeed.

If you would like to visit this academy to see what we are so proud of, please feel free to contact the office and make an appointment. We would be delighted to meet you!

Mark Lawrence, Headteacher

01935 424454 / bucklersmead.com



Buckler's Mead Academy

Preston School

Preston School is a highly successful 11 - 16 specialist Business and Enterprise Academy.

Our values are simple and clear: the most important person is the learner, who is central to all that happens. To achieve our strapline of 'Bringing Learning to Life & Life to Learning', it is crucial for the learning process to be active, fun and adapted to suit all learners. Our curriculum is relevant to each individual and the outcomes, experiences and knowledge from their time here must prepare them very well for life beyond the school in the 21st Century.

As a Business & Enterprise Specialist Academy we have an individual remit, to develop and

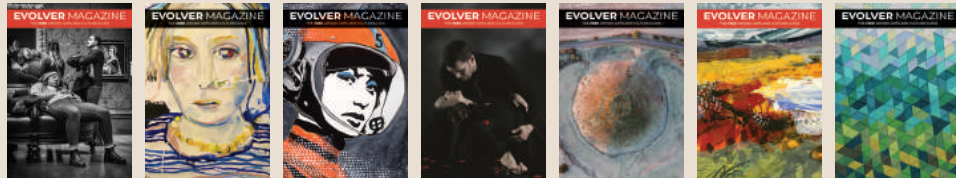
share best practice in business and enterprise learning. Our curriculum and the associated learning experiences support the local economy in the following ways:-

- Supporting business productivity
- Encouraging new enterprise
- Delivering skills for the economy
- Competing in a global market
- Promoting innovation

To learn more about Preston School please visit our website. Alternatively, please come and visit us - you will be made most welcome!

Gregg Morrison, Principal

01935 471131 / prestonschool.co.uk



EVOLVER MAGAZINE

Pick up your **FREE** WESSEX ARTS AND CULTURE GUIDE at arts venues, galleries, museums, art shops, cafés, libraries and tourist information centres (etc) throughout Dorset, Somerset, East Devon, West Wiltshire, Bristol and Bath

evolver.org.uk



Yeovil College and University Centre

Yeovil College has been serving the communities in South Somerset and North and West Dorset for 130 years.

The College was first formed in 1887 when Somerset County Council began formally organising Science and Art classes in Yeovil. In 1947, the first Principal was appointed to lead Yeovil Technical College and when secondary education in the Yeovil Borough was reorganised in 1974, Yeovil College became one of the early tertiary colleges to be formed in England.

Today, Yeovil College remains passionate about its role as a key provider of education and training in South Somerset and North and West Dorset. It remains committed to its role as a tertiary college for the whole community and currently supports around 5,000 full and part-time students.

Working with over 800 regional and national employers and the local community, Yeovil College regularly reviews the courses and study programmes on offer, introducing new qualifications to meet demand, including Apprenticeships, A Levels, vocational courses, university level courses, and professional training. We were one of only 21 colleges in the country to be involved in the work placement pilot element of the Government announced Technical Education courses (T levels), which are going from strength to strength.

As a result, Yeovil College learners are well-placed to gain the skills and personal attributes required by employers to kick-start their careers.

Our learners are at the heart of everything we do, and our study programmes cover a huge range of curriculum areas from Sport, IT, Business, Engineering, and Health & Care to Construction, Hospitality and Hair & Beauty – we have a restaurant and a salon that are open to students, staff and the general public. Our ambition for our learner is uncompromised and we have celebrated a raft of excellent results, including achieving 100% A Level success rate for the second successive year and we're top of the league tables achievement rate for all Level 3 courses.

We cover A Levels, vocational courses, Apprenticeships and with our Yeovil College University Centre, you can take your education to university level on your doorstep, without having to travel. We work in partnership with four fantastic institutions - University of Gloucestershire, Plymouth University, The University of the West of England and Pearson Education.

Our Degree Level programmes have been carefully selected and designed to align with the local employment market to help increase our students' career development and earning potential.

So what are you waiting for? Find the right course for you:

Yeovil College: 01935 423921 / yeovil.ac.uk

University Centre Yeovil: 01935 845454 / yeovil.ac.uk/university-centre



Local information

AMBULANCE SERVICE

Non-Emergency: 111

Emergency: 999

ANIMAL WELFARE: RSPCA

Emergency: 0300 1234 999

Local Information: 07885 295 208

southeastssomerset.rspca@gmail.com

CHEMISTS

Abbey Pharmacy, The Forum, Abbey Manor Park: 01935 478243

Boots, 37 Middle Street: 01935 426673

Boots, Babylon Hill: 01935 434621

John Preddy, Preston Grove: 01935 433971

Day Lewis Pharmacy, 74 Hendford: 01935 423393

Penn Hill Pharmacy, 9 South Street: 01935 706604

Well Pharmacy, 67 St Johns Road: 01935 421768

Superdrug Stores plc, 15 High Street: 01935 422829

CITIZENS ADVICE BUREAU: 0344 488 9623

CAB Advice Line: 0808 2787842

CEMETERY: 01935 423742

CREMATORIUM: 01935 476716

ELECTRICITY (Emergencies)

Western Power Distribution: 0800 6783 105

Southern Electric Power Distribution: 08000 727 282

FIRE SERVICE

Reckleford: 01935 382000

Emergency: 999

FLOODLINE: 0345 988 1188

GAS SERVICE (Emergencies)

0800 111 999

GOVERNMENT DEPARTMENTS

Job Centre Plus: 0800 055 6688

Registrar, Births, Deaths & Marriages: 01823 282251 /

somersetregistrations@somerset.gov.uk

HM Revenues & Customs: 0845 010 9000

GUEST HOUSES / HOTELS

Details available from Tourist Information Centre: 01935 829333

HEALTH CENTRES

NHS Direct: 111

Hendford Lodge Medical Centre, 74 Hendford: 01935 470200

Penhill Surgery, St Nicholas Close: 01935 470800

Preston Grove Medical Centre, Preston Grove: 01935 474353

Yeovil District Hospital, Higher Kingston: 01935 475122

Yeovil Health Centre, Boots, Middle Street: 01935 709269

Oaklands Surgery, Birchfield: 01935 709269

Ryalls Park Medical Centre, Marsh Lane: 01935 434000

Abbey Manor Medical Practice, The Forum: 01935 404820

HOUSING

Homefinder Somerset - SSDC Housing Advice Team: 01935 462462 /

housingadvice@southsomerset.gov.uk

Abri: 01935 404500

LAW COURTS

County Court, Hendford: 01935 382150
Magistrates Court, Petters Way: 01935 426281

LEISURE

Goldenstones Pools and Leisure Centre: 01935 845888
Westland Sports and Fitness Centre: 01935 314652

LIBRARY

King George Street: 0300 123 2224

MEMBER OF PARLIAMENT

Marcus Fysh MP, Conservative Office, 21 - 22 High Street: 01935 314321

POLICE (Avon & Somerset Constabulary)

Non Emergency: 101
Emergency: 999
Neighbourhood Watch: 101

POST OFFICE (Enquiries): 0345 722 3355

SOMERSET COUNTY COUNCIL: 0300 123 2224

SOUTH SOMERSET DISTRICT COUNCIL

Brympton Way, Yeovil: 01935 462462

WATER: 0345 600 4 600

WELFARE SERVICES AND ADVICE CENTRES

Citizens Advice Bureau: 0800 144 88488
Age UK: 0800 055 6112
Somerset Skills and Learning: 0330 332 7997
Samaritans: 116 123
Oaklands Children Centre: 01935 848942

YEovil TOWN COUNCIL

Town House, 19 Union Street, BA20 1PQ
Town Clerk - Amanda Card: 01935 382424

CLUBS AND SOCIETIES

Yeovil has a wealth of clubs, societies, organisations, society and community associations and support groups. Full details can be obtained from SSVCA, Yeovil Library, or South Somerset District Council.



Fire safety advice

Would you, or someone you know benefit from a home fire safety visit?

Devon and Somerset Fire and Rescue Service offers a free home safety visit service to help make everyone safer from the risk of fire.

The visit is completely free of charge.

To find out more and book a visit, call:
0800 0502 999

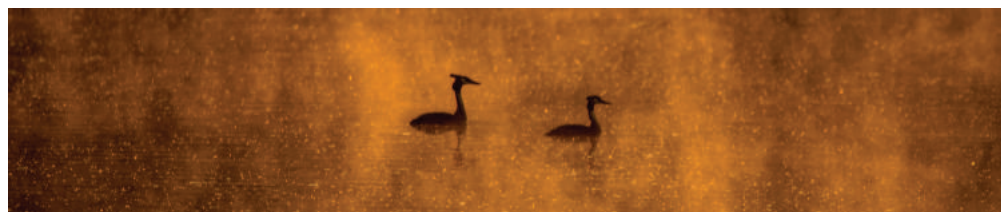
You can also refer online at:
dsfire.gov.uk/homesafety

A home fire safety visit takes around 45 minutes. A specialist home fire safety adviser from Devon and Somerset Fire and Rescue Service will come into your home and identify and reduce any fire risks specific to you, your lifestyle, and your property. They will advise on escape routes and what to do in the event of a fire, as well as providing (free) fire safety equipment where needed.

Free fire safety equipment

A working smoke alarm is a vital start when it comes to alerting yourself and your loved ones to fire. During the home fire safety visit, the fire safety adviser will check and replace alarms.

For people with additional needs or disabilities, the fire service can provide more specialist kit, such as hard of hearing smoke alarms that come with a strobe light and vibrating pad. They can also supply other necessary fire safety equipment free of charge.



Bring all your insurance under
OUR ROOF



★ Trustpilot



Rated 4.8 out of 5*

With **over 100 branches** across the country, whether you need **car, van, home, tractor or landlord insurance**, we'll take care of you.

Call **A-Plan Yeovil** today on **01935 488 000**
and quote **'YEOVIL TOWN GUIDE'**

A-plan
insurance
// a howden company

*Trustpilot score correct as of 13/05/2022. A-Plan Insurance is a trading style of A-Plan Holdings which is authorised and regulated by the Financial Conduct Authority. Registered office: 2 Des Roches Square, Witney, OX28 4LE. Registration number 750484. AP220524

MAKE YEOVIL CREATIVE

#MakeYeovilCreative



- Artist Membership
- Creative Education
- Community Events
- Inspiring Exhibitions
- Learning Workshops

WELCOME TO ALL

yeovilartspace.uk

23 Vicarage Walk,
Quedam Shopping Centre,
Yeovil BA20 1EU

  @YeovilArtSpace

Registered Charity 1189660

